



3/26/2024

Township of Readington Municipal Building
Department of Public Works
509 Route 523,
Whitehouse Station, New Jersey 08889

Re: Request to Conduct Routine Maintenance within Township Parks
Block 64, Lot 13
Block 70, Lots 19.08, 19.23, 38.33, & 38.34
Township of Readington
Hunterdon County, New Jersey

Dear Ron Christy,

This letter is to inform you that Public Service Electric & Gas (PSE&G) is requesting permission to conduct routine maintenance to access roads within transmission Right of Ways (ROWs) that overlap with Readington Township Hiking and Equestrian trails.

Several PSE&G transmission towers are currently inaccessible to PSE&G personnel due to significant rutting and erosion within the access roads. These access roads must be restored to their original condition in order to allow vehicle access to the transmission towers in case of emergency or other required maintenance. The subject areas are located off Pleasant Run Road and Shurts Road. These locations can be viewed on the enclosed maps (Figure 1, Figure 2, Figure 3).

To restore the roads, red shale aggregate stone will be utilized to fill ruts and regrade eroded areas while preserving the natural look and feel of the parks. The stone will be sourced locally from Blooming Glen Quarry at two sizes, 3/4 inch clean and 3/8 inch clean mixed with a modified stone dust blend. The larger cut stone will be used to fill deep ruts and incised cuts to the access road. Finer mixed stone will be used to top dress eroded, rutted, and wet areas without adversely impacting foot or equestrian traffic. Roads and trails will not be expanded, elevated, or improved beyond their original condition and will be regraded following repairs. The contractor, Enviroscapes, Inc will only utilize light duty tracked equipment and hand tools for maintenance activities. Stone samples are available for your viewing by request.

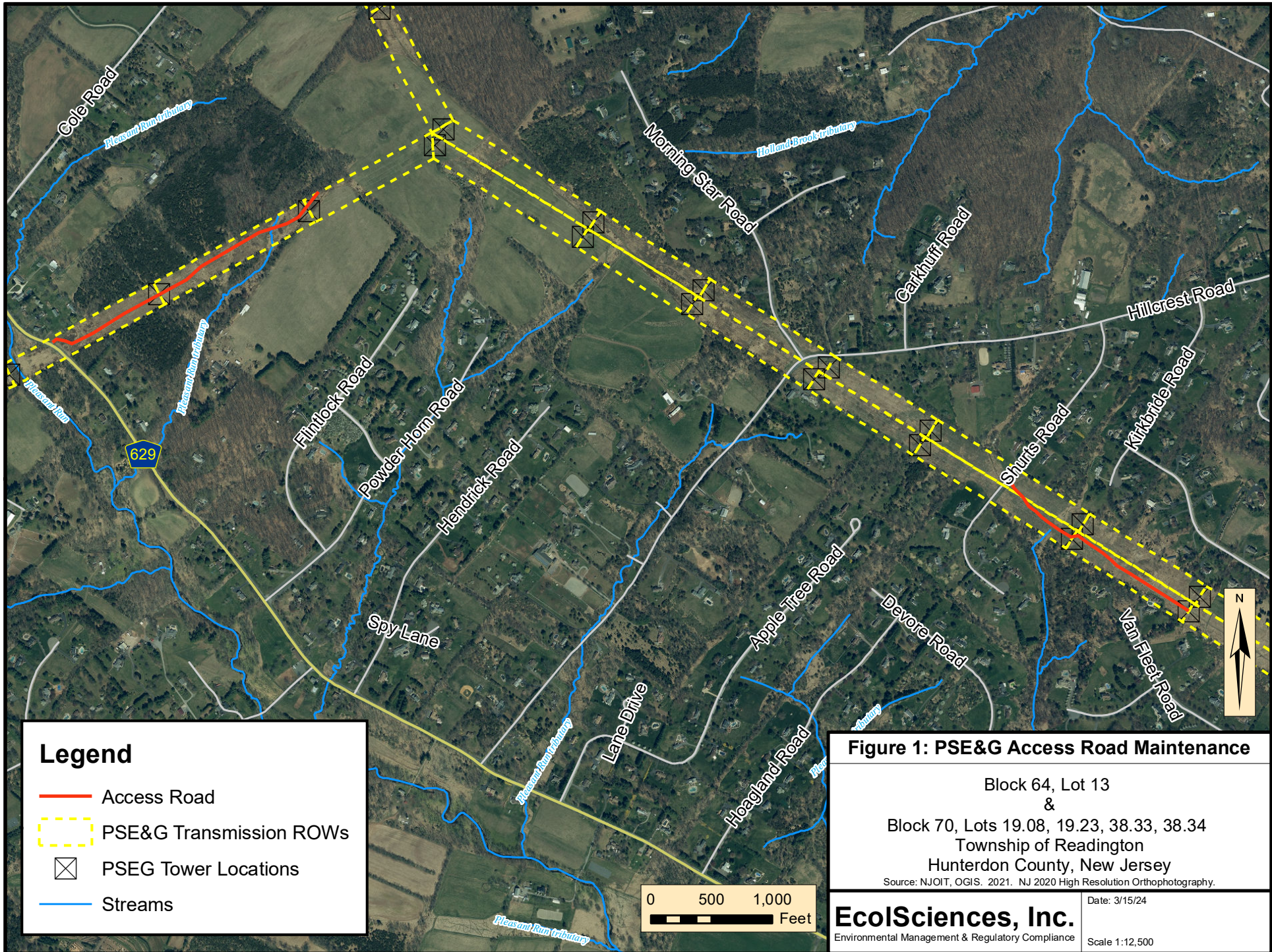
Work is scheduled to start as soon as possible with your permission and is expected to conclude within one month of the start date.

Should you have additional questions or require any additional information, please contact me at tdigiovanni@ecolsciences.com or (908) 721-2106. I am also available for a field meeting along with a representative from PSE&G by request. We patiently await your response. Thank you.

Sincerely,

Thomas DiGiovanni

Thomas DiGiovanni
Environmental Scientist



Legend

- Access Road
- PSE&G Transmission ROWs
- PSEG Tower Locations
- Streams

Figure 1: PSE&G Access Road Maintenance

Block 64, Lot 13
 &
 Block 70, Lots 19.08, 19.23, 38.33, 38.34
 Township of Readington
 Hunterdon County, New Jersey

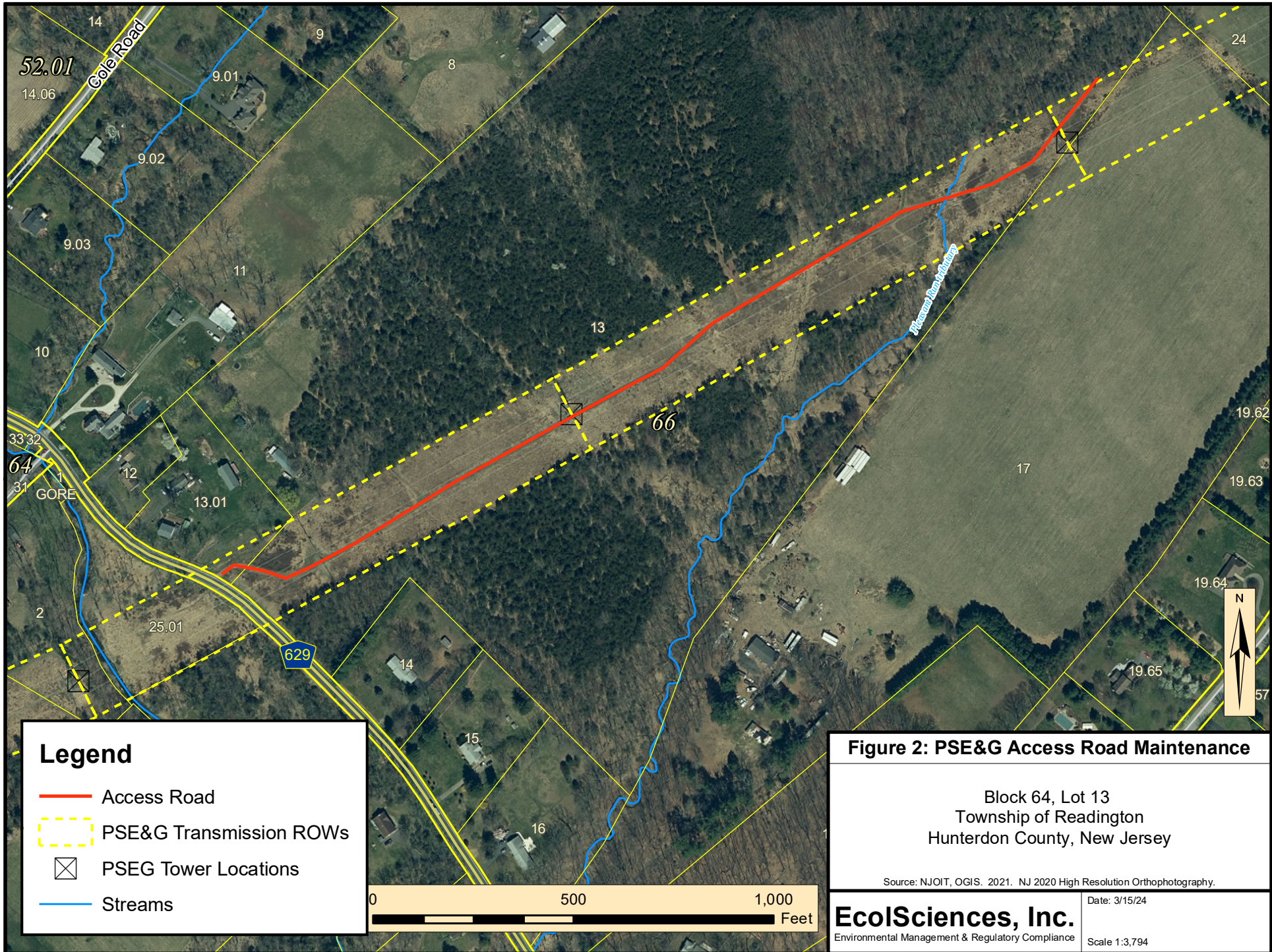
Source: NJOT, OGIS. 2021. NJ 2020 High Resolution Orthophotography.

EcolSciences, Inc.

Environmental Management & Regulatory Compliance

Date: 3/15/24

Scale 1:12,500



Legend

- Access Road
- PSE&G Transmission ROWs
- X PSEG Tower Locations
- Streams

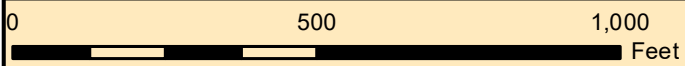


Figure 2: PSE&G Access Road Maintenance

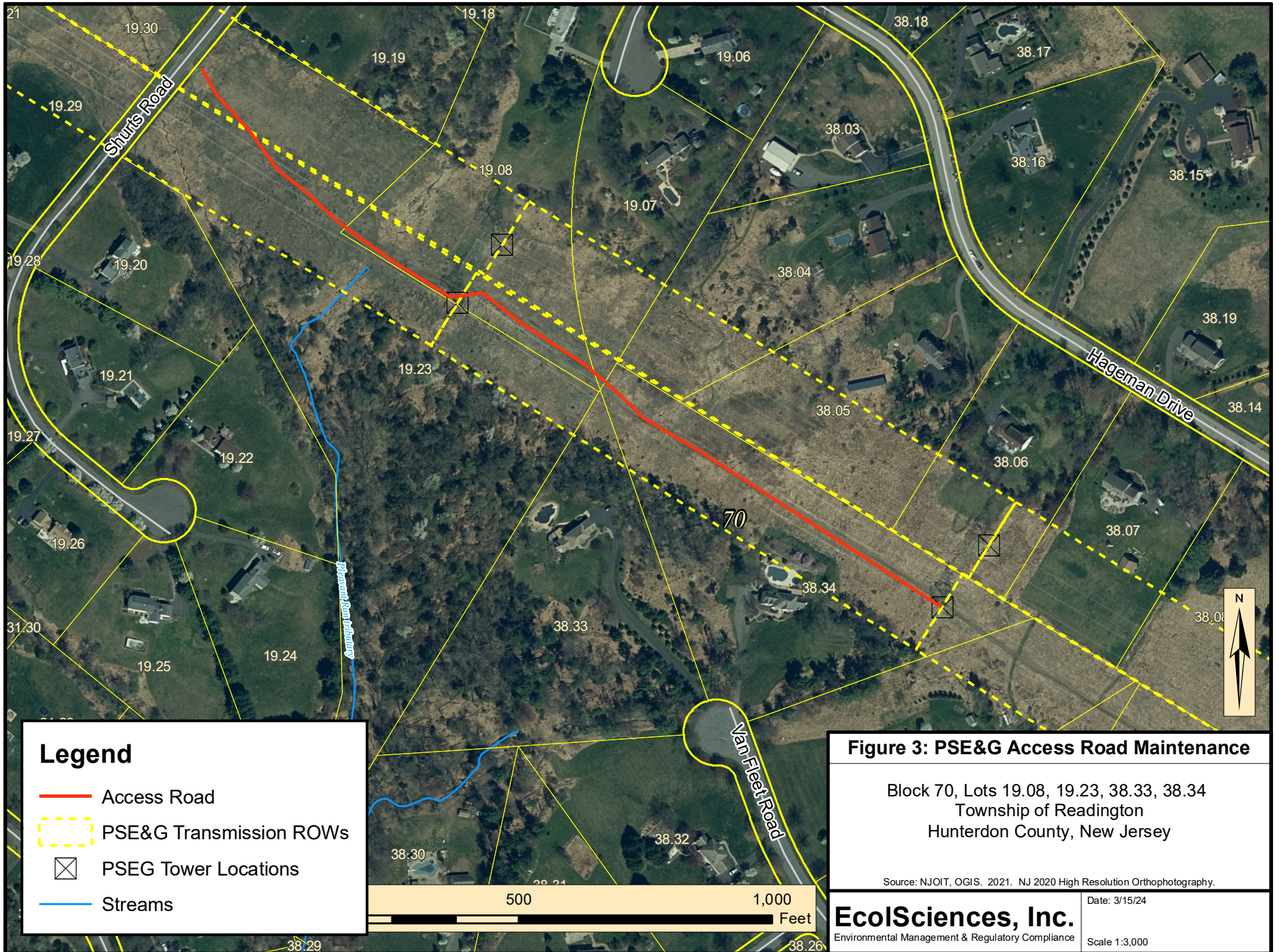
Block 64, Lot 13
 Township of Readington
 Hunterdon County, New Jersey

Source: NJOIT, OGIS. 2021. NJ 2020 High Resolution Orthophotography.

EcolSciences, Inc.
 Environmental Management & Regulatory Compliance

Date: 3/15/24

Scale 1:3,794



Legend

- Access Road
- PSE&G Transmission ROWs
- ☒ PSEG Tower Locations
- Streams

Figure 3: PSE&G Access Road Maintenance

Block 70, Lots 19.08, 19.23, 38.33, 38.34
 Township of Readington
 Hunterdon County, New Jersey

Source: NJOIT, OGIS. 2021. NJ 2020 High Resolution Orthophotography.

EcolSciences, Inc.
 Environmental Management & Regulatory Compliance

Date: 3/15/24
 Scale 1:3,000