

Readington Township, along with the Hunterdon Land Trust (HLT) and the State Agricultural Development Committee (SADC) announce the preservation of the Barrettstown Joy Farm on Lamington Road in northeast Readington Twp. This becomes Readington’s 74th preserved farm and increases the total of preserved farmland to 4,809 acres. This also expands a large contiguous area of preserved farms across Readington, Tewksbury and Bedminster townships.

Stefanie Miller, SADC Preservation Program Manager, noted that “It has been a pleasure working with the family to preserve this hidden gem in Readington. The family has a history of farmland preservation dating back to 1987, when they preserved 85 acres in Branchburg Township and later 163 acres in East Amwell Township. The Barrettstown Joy Farm continues this legacy and contributes 102 acres to a concentration of over 3,500 acres of preserved farmland in the region.”



View of the Barrettstown Joy Farm, Readington, NJ

The New Jersey Farmland Preservation Program has surpassed the 250,000 acre preserved milestone with Hunterdon County and Readington Township both key participants in this effort. The administrative and preservation costs for this project were contributed by the SADC, with Readington and the Hunterdon Land Trust identifying the opportunity and helping to initiate the project.

This strategic AG preservation also serves to further protect streams and wetlands in northern Readington, the Rockaway Creek and nearby Lamington River, and their respective floodplains and wetlands.

 STATE OF NEW JERSEY
DEPARTMENT OF AGRICULTURE
STATE AGRICULTURE DEVELOPMENT COMMITTEE

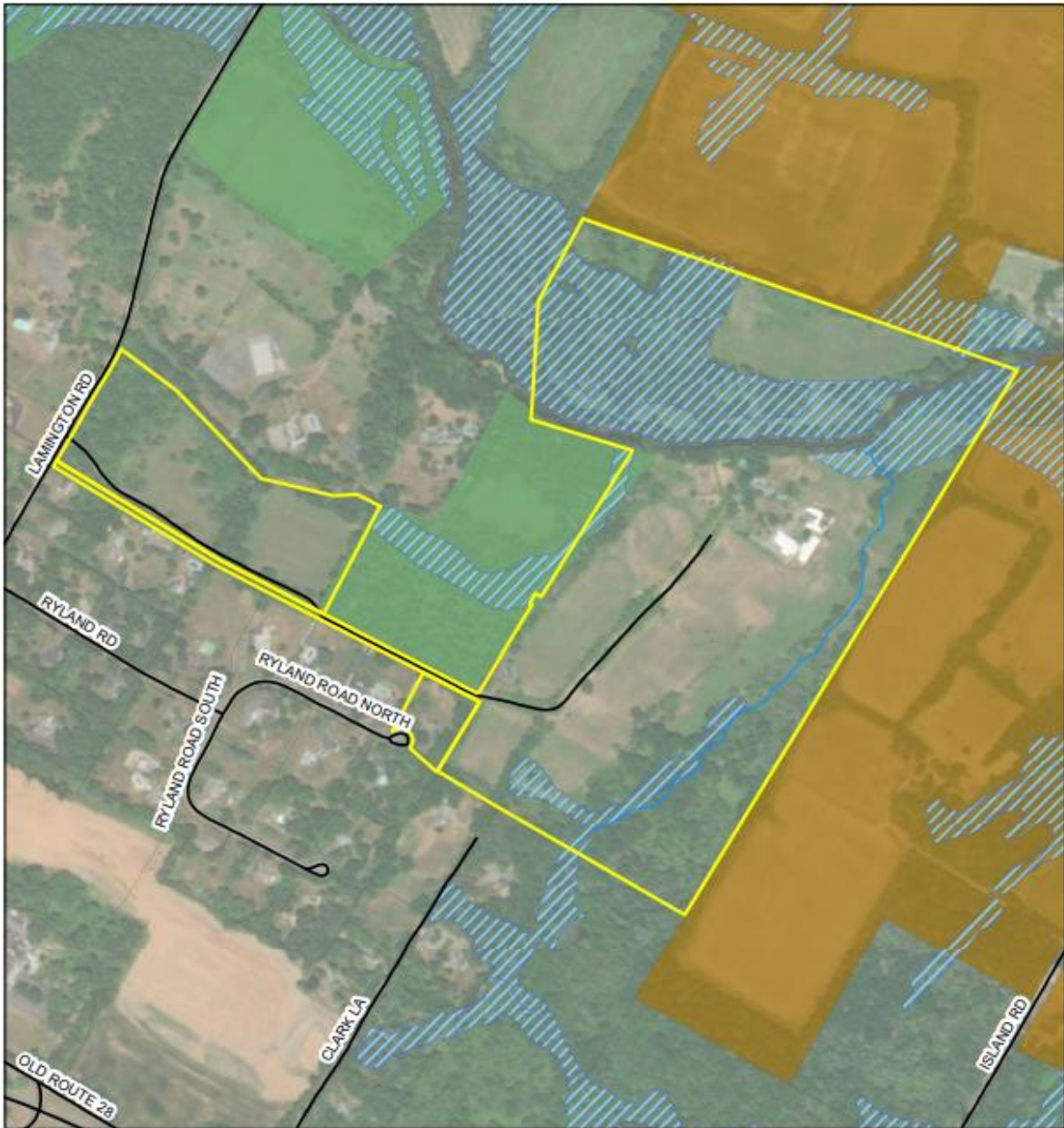
- ▶ Home
- ▶ Landowners
- ▶ Preservation Partners
- ▶ General Public
- ▶ About the SADC
- ▶ Farmland Preservation
- ▶ Appraisals
- ▶ TDR
- ▶ Right to Farm
- ▶ Agricultural Mediation
- ▶ Farm Link
- ▶ Statutes/Rules/Policies
- ▶ Forms and Applications
- ▶ Rule Proposals



The New Jersey Farmland Preservation Program has surpassed the 250,000 acre preserved milestone!

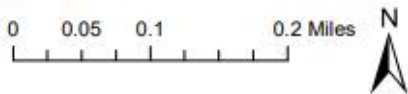
This farm is in the Lamington Agricultural District (ADA) and contains significant wetlands. Wetlands are areas of land where water covers the soil all year or for varying periods during the year. They include swamps, bogs and marshes. Wetlands are important features that provide wildlife habitat, store floodwaters, and improve water quality. Source NJDEP Land Use Land Cover



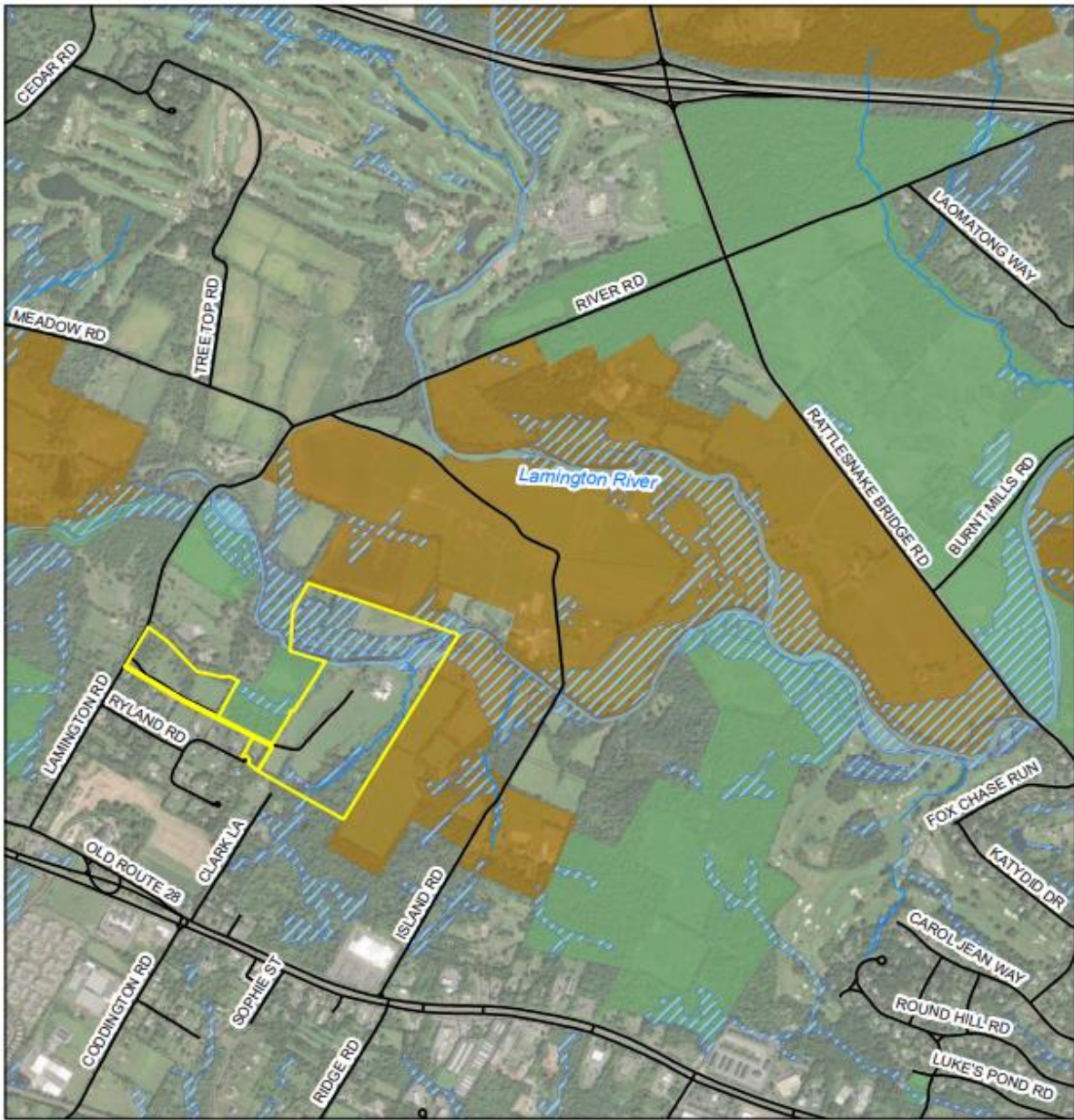


Barretstown Joy Farm
 Readington Twp., B14 L51, L5.06, L3.01

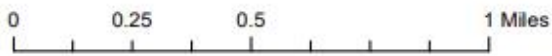
-  Barretstown Joy Farm
-  Streams
-  Wetlands
-  Open Space
-  Preserved Farmland



Map created March 2024 (c) Hunterdon Land Trust. This map was developed using Hunterdon County, New Jersey, Geographic Information System digital data, but this secondary product has not been verified by Hunterdon County and is not county-authorized.



Barretstown Joy Farm
Readington Twp., B14 L51, L5.06, L3.01



-  Barretstown Joy Farm
-  Streams
-  Wetlands
-  Open Space
-  Preserved Farmland



Map created March 2024 (c) Hunterdon Land Trust. This map was developed using Hunterdon County, New Jersey, Geographic Information System digital data, but this secondary product has not been verified by Hunterdon County and is not county-authorized.

Jacqueline Middleton, HLT's Land Acquisition Director, commented that "Readington Township is committed to protecting its natural resources and has done an excellent job in leveraging county, state, and nonprofit funding for farmland and open space preservation projects. HLT has assisted with many of these projects and looks forward to continuing to partner with Readington in its efforts to preserve more land."

Key stakeholders who provided guidance, technical advice and funding for this preservation effort include:

- State Agricultural Development Committee (SADC)
- Hunterdon County Agricultural Development Board (CADB)
- Hunterdon Land Trust (HLT)
- Readington Township Open Space Advisory Board (OSAB)
- Readington Township Agricultural Committee



Juergen Huelsebusch, Chair Open Space Advisory Board and AG Advisory Committee Liaison